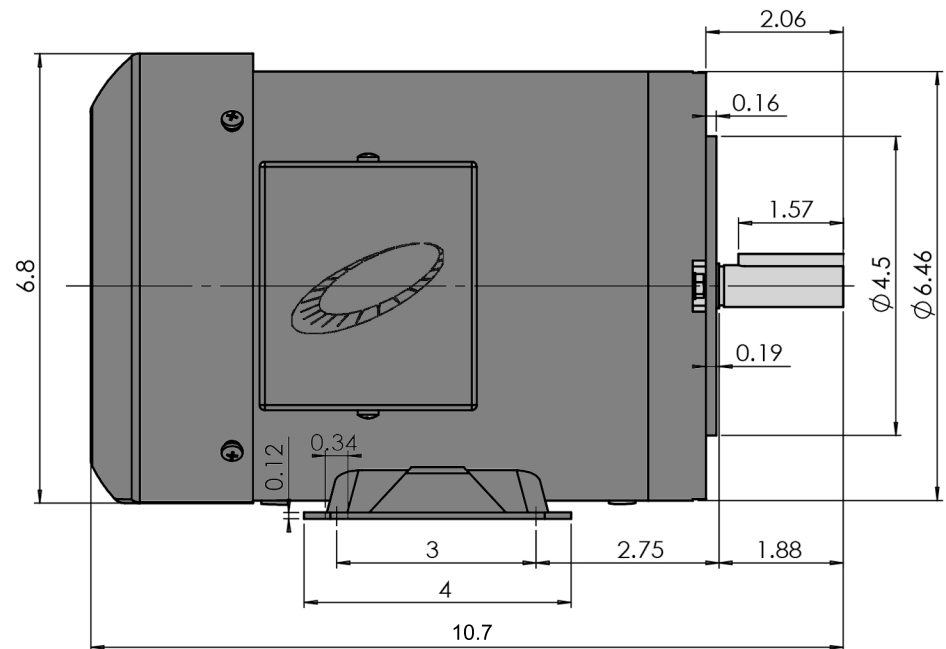
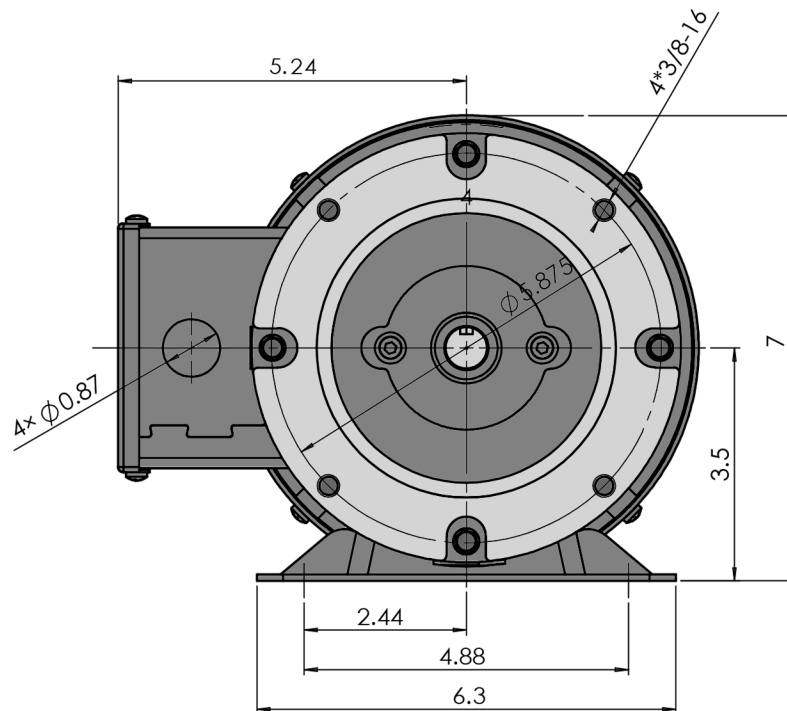
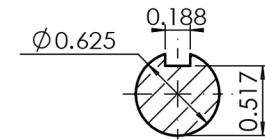


MaxMotion



MQRP-104CH

Version:2HUA

Revised: July 2020

HP

RPM

FRAME

ENCLOSURE

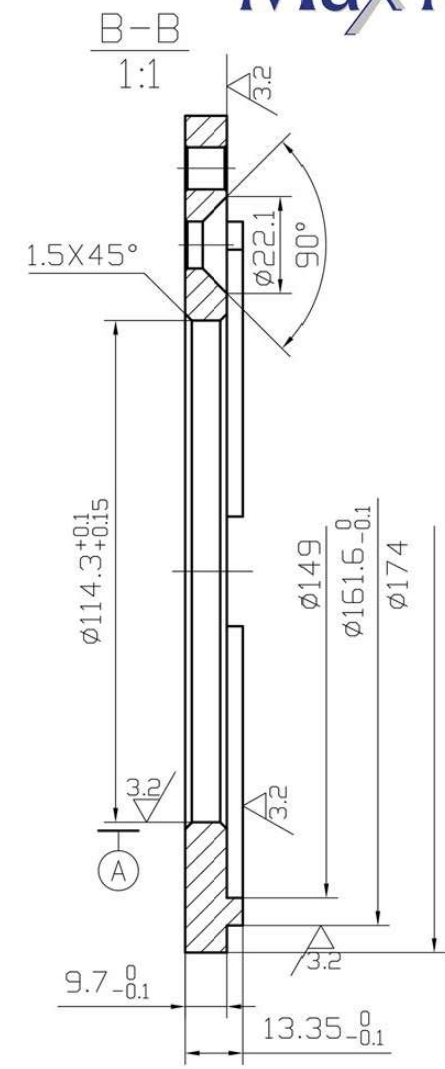
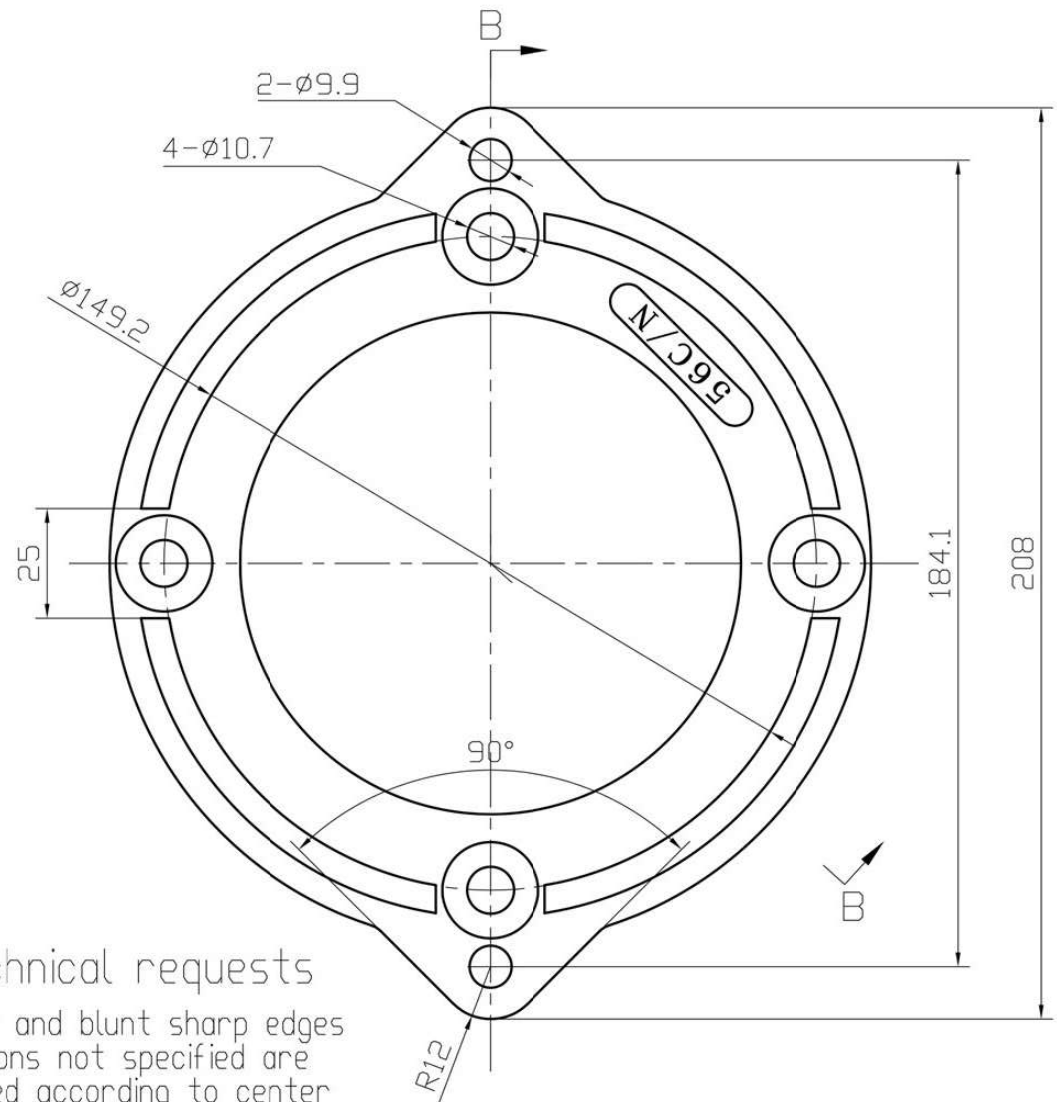
Customer is responsible in determining that MaxMotion product will fit/perform suitably in the intended application

1

1800

56C

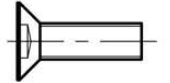
TEFC



technical requests
deburr and blunt sharp edges
dimensions not specified are
machined according to center
symmetry

ITEM #:56C/N


5/16-18UNCx1-1/4
With Spring Washer Galvanized
2 PCS


3/8-16UNCx1
Blackening
4 PCS